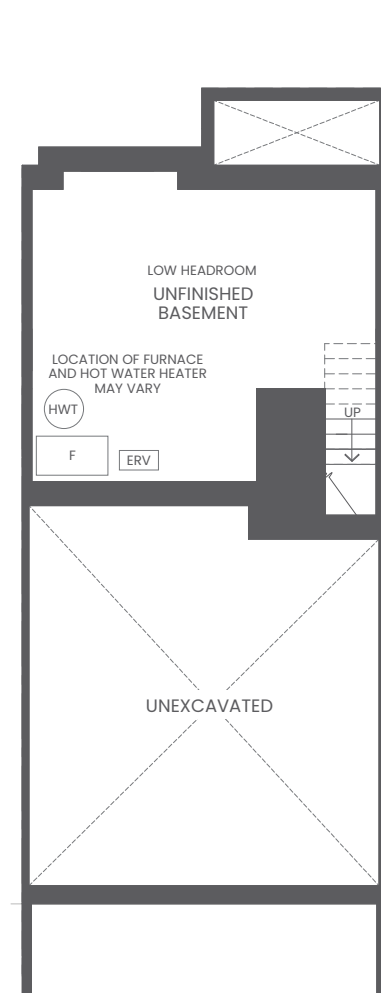


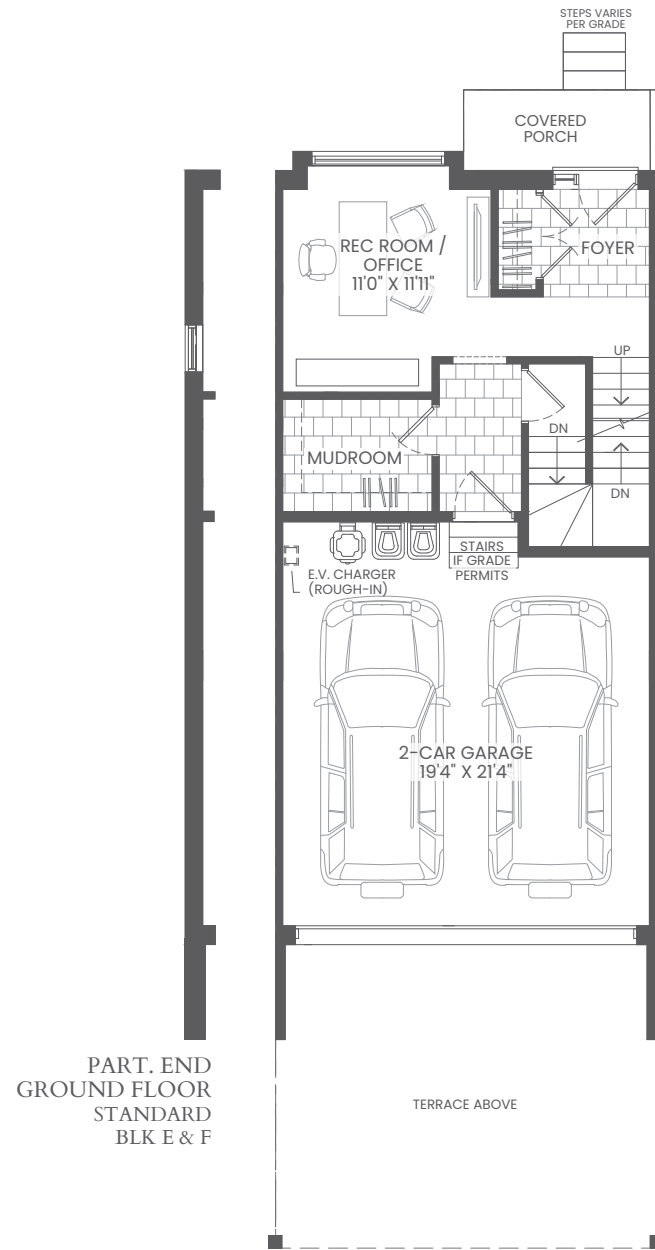
WILLOW

2,046 sq. ft. / 2,056 sq. ft. (UPGRADE) + 379 sq. ft. (OUTDOOR LIVING SPACE)
 2,107 sq. ft. / 2,117 sq. ft. END (UPGRADE) + 379 sq. ft. (OUTDOOR LIVING SPACE)
 3 - 4 Bedrooms / 2.5 - 3.5 Bathrooms

THE ELMS
 OF THORNHILL WOODS

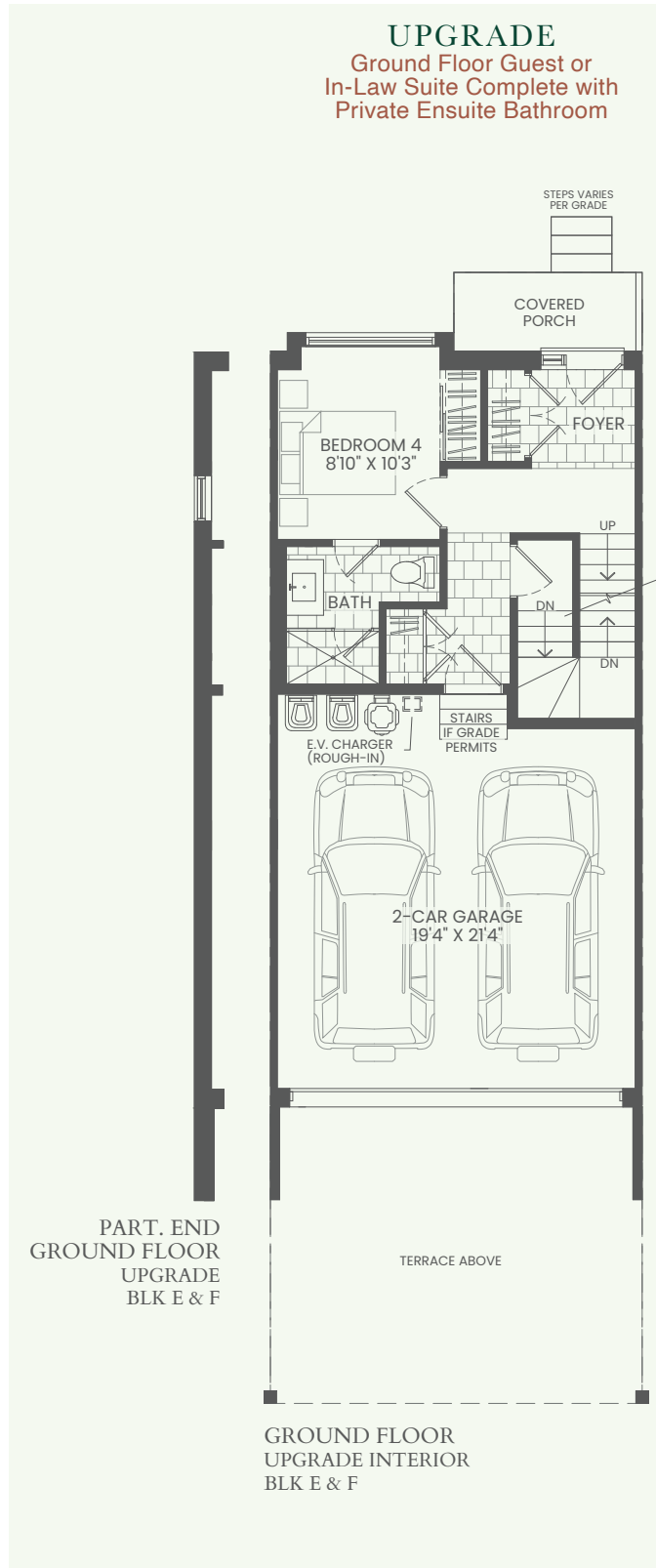


BASEMENT
 STANDARD INTERIOR
 BLK E & F



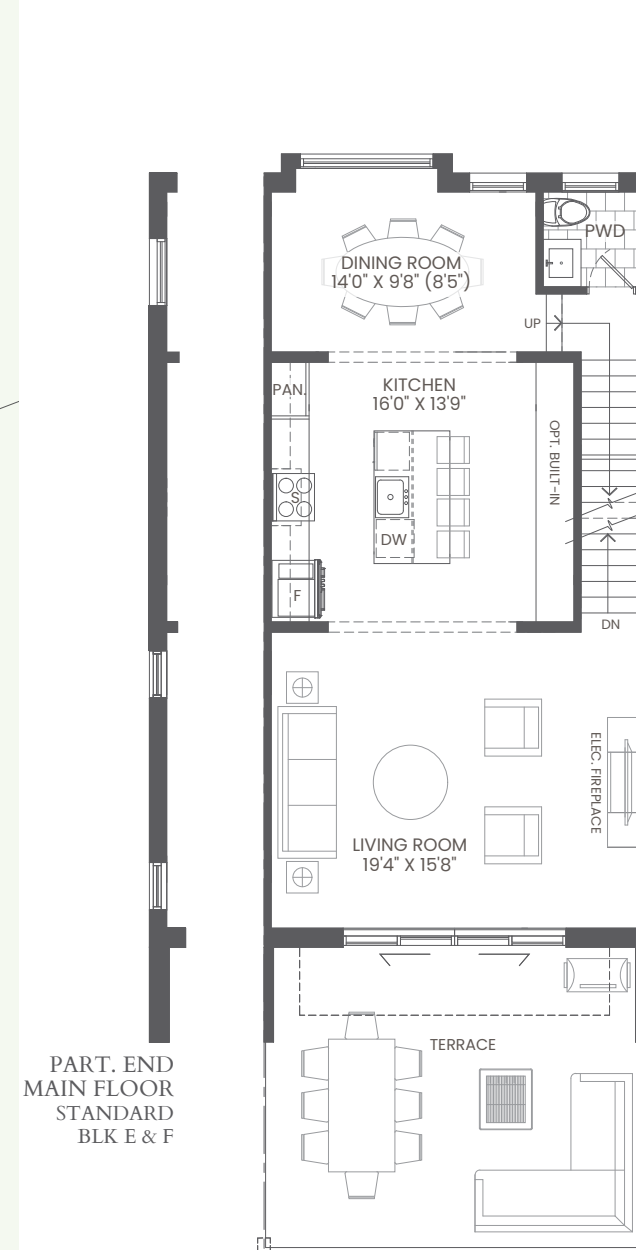
PART. END
 GROUND FLOOR
 STANDARD
 BLK E & F

GROUND FLOOR
 STANDARD INTERIOR
 BLK E & F



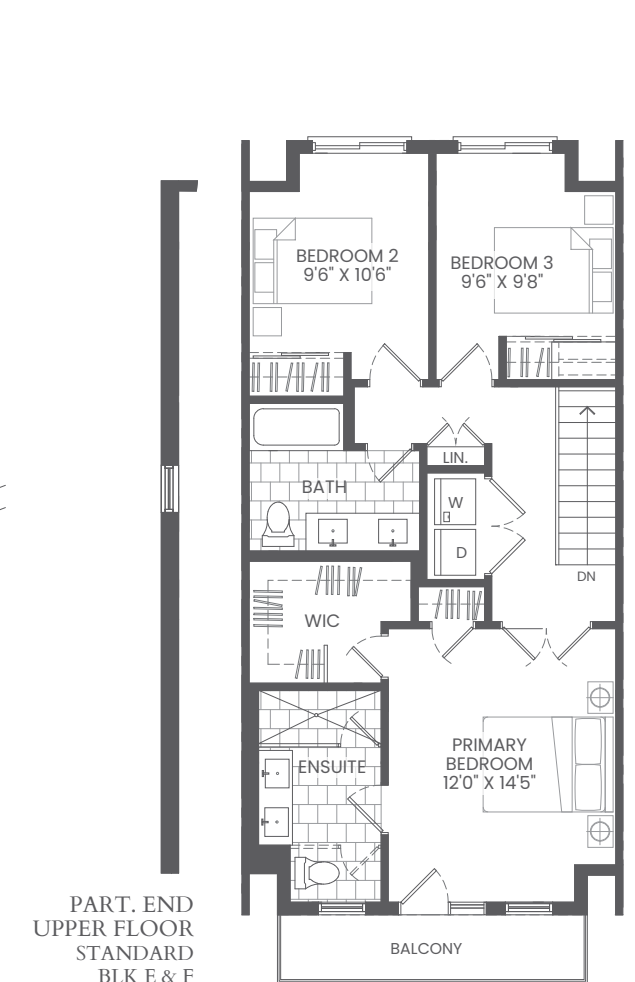
PART. END
 GROUND FLOOR
 UPGRADE
 BLK E & F

GROUND FLOOR
 UPGRADE INTERIOR
 BLK E & F



PART. END
 MAIN FLOOR
 STANDARD
 BLK E & F

MAIN FLOOR
 STANDARD INTERIOR
 BLK E & F



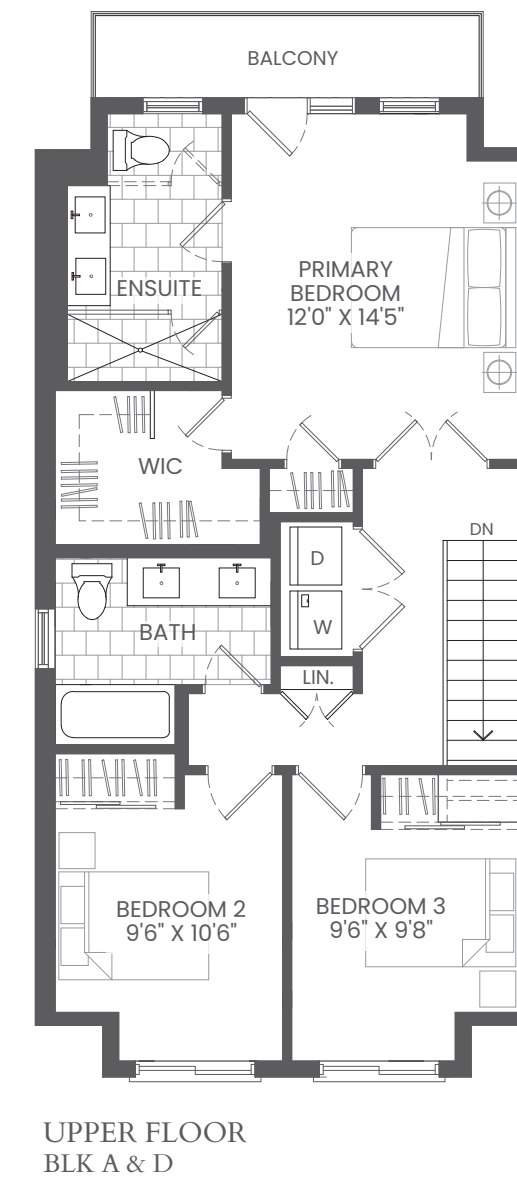
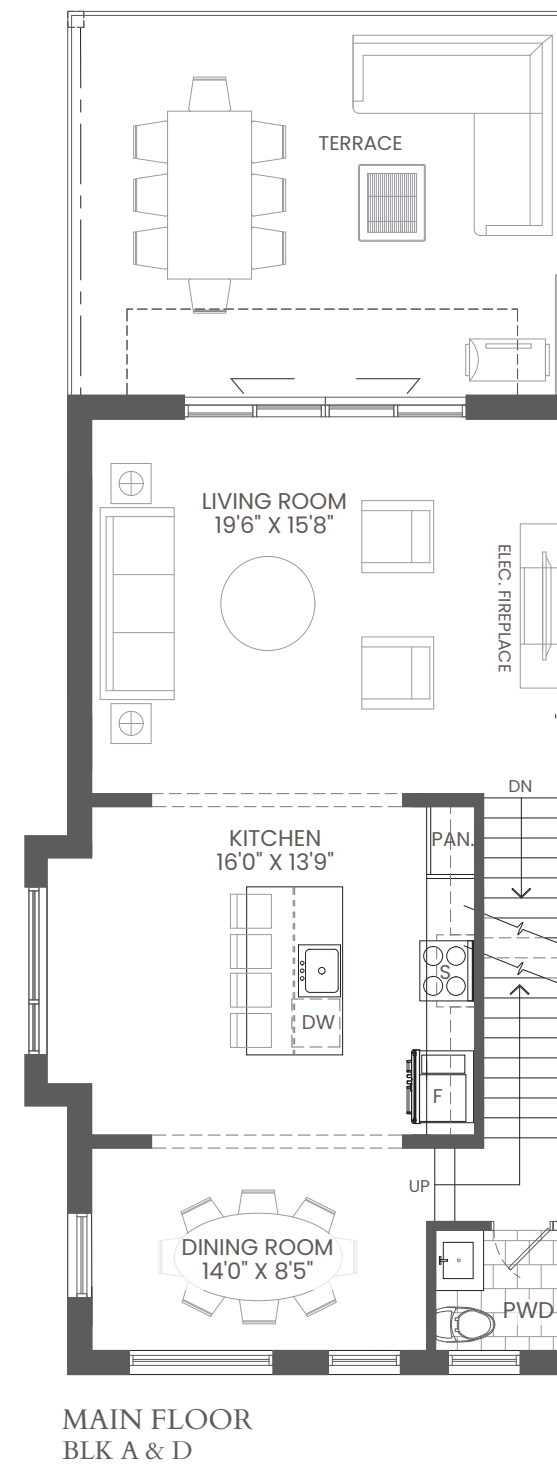
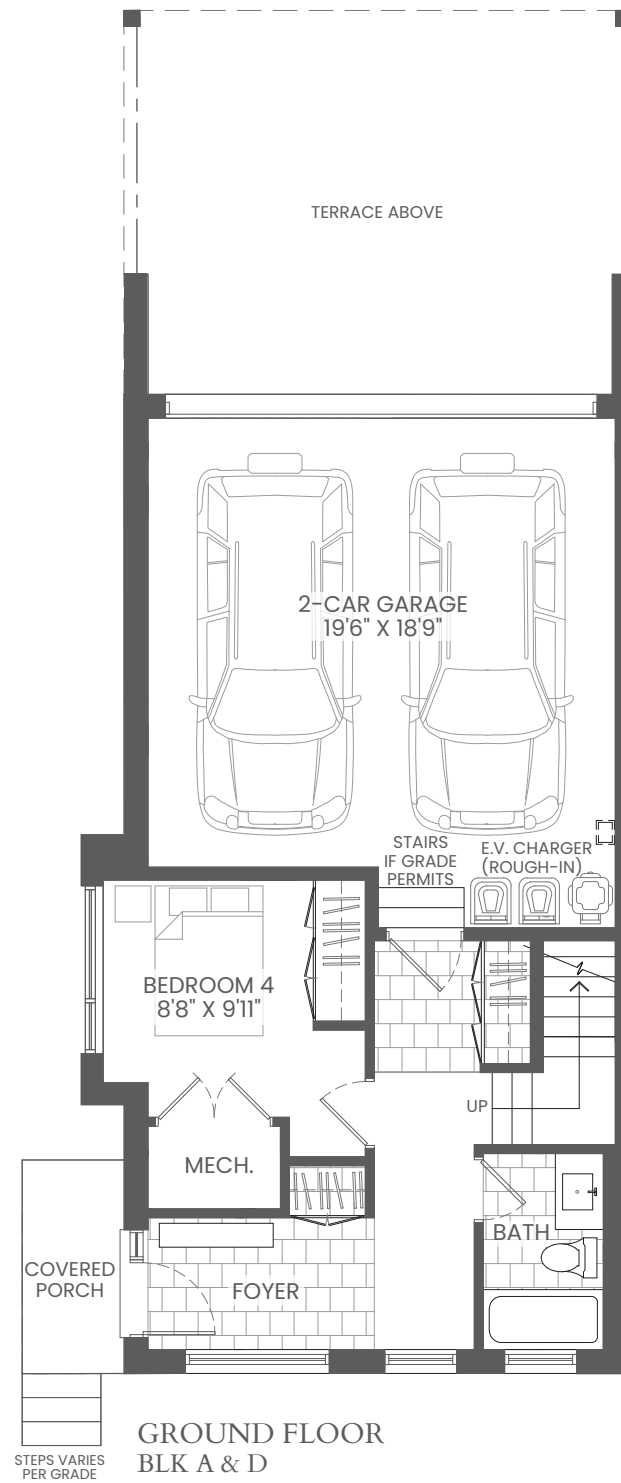
PART. END
 UPPER FLOOR
 STANDARD
 BLK E & F

UPPER FLOOR
 STANDARD INTERIOR
 BLK E & F

CHESTNUT

2,190 sq. ft. + 391 sq. ft. (OUTDOOR LIVING SPACE)
4 Bedrooms / 3.5 Bathrooms

THE ELMS
OF THORNHILL WOODS



MULBERRY

2,046 sq. ft. / 2,056 sq. ft. (UPGRADE) + 379 sq. ft. (OUTDOOR LIVING SPACE)
 2,107 sq. ft. / 2,117 sq. ft. END (UPGRADE) + 379 sq. ft. (OUTDOOR LIVING SPACE)
 3 - 4 Bedrooms / 2.5 - 3.5 Bathrooms

THE ELMS
 OF THORNHILL WOODS

UPGRADE Ground Floor Guest or In-Law Suite Complete with Private Ensuite Bathroom

